

33rd Annual NEAL CHARSKÉ FAIRMONT FIREBIRD Cross Country Invitational

SATURDAY, OCTOBER 3, 2015

RACE SCHEDULE

8:00-9:00 AM	Schools sign in and pick up packets (At baseball diamond near the lake)
9:00 AM	Varsity Girls Blue – Div. I
9:30 AM	Varsity Boys Blue – Div. I
10:00 AM	JV Girls - All Divisions Team/Open Race
10:45 AM	JV Boys - All Divisions Team Race
11:15 AM	JV Boys Open Race (Timed but not scored)
11:30 AM	Awards for High School Silver Division
11:45 AM	Varsity Girls Silver – Div. II/III
12:30 PM	Varsity Boys Blue – Div. II/III
1:15 PM	Middle School Varsity Girls All Divisions
1:30 PM	Awards for High School Blue Division
1:45 PM	Middle School Reserve Girls - All Divisions Team/Open Race
2:15 PM	Middle School Varsity Boys All Divisions
2:45 PM	Middle School Reserve Boys - All Divisions Team/Open Race
3:15 PM	Awards for Middle Schools
3:30 PM	Elementary 1 Mile Fun Run – subject to change (may be earlier)

CHANGE FOR 2015 (AND FUTURE):

DI WILL RUN FIRST IN ODD YEARS (2015) & DII/III WILL RUN FIRST IN EVEN YEARS (2016)

AWARDS

VARSITY BOYS & GIRLS DIVISION SILVER (II-III), BLUE (I)	
Trophies to Champion, Runner-up, and 3 rd Place in Silver and Blue Divisions	
1 st – 10 th -- Individual Large Medals	
11 th - 20 th -- Individual Small Medals	
21 st - 30 th —Ribbons	
JUNIOR VARSITY BOYS & GIRLS DIVISION SILVER (II-III), BLUE (I)	
Boys Team Race	Champion and Runner-up Trophies Individual Awards: Top 30 finishers -- Ribbons
Girls Team Race	Champion and Runner-up Trophies Individual Awards: Top 30 finishers --Ribbons
MIDDLE SCHOOL VARSITY GIRLS DIVISION (ALL DIVISIONS)	
Team Awards	Champion, Runner-up, and 3 rd Place
Individual Awards	1 st through 15 th – Medals 16 th through 30 th - Ribbons
MIDDLE SCHOOL VARSITY BOYS DIVISION (ALL DIVISIONS)	
Team Awards	Champion, Runner-up, and 3 rd Place
Individual Awards	1 st through 15 th – Medals 16 th through 30 th – Ribbons
MIDDLE SCHOOL BOYS AND GIRLS RESERVE	
1 st through 20 th – Ribbons	

GENERAL INFO

- As many as ten (10) runners may start a VARSITY team race from each school. The JUNIOR VARSITY Team/Open races may have an unlimited number of runners per team.
- A team must have five (5) runners finish the race to count in the team scoring.
- No B-teams will be allowed in our invitational.
- **We must stop the electronic timing at 25 minutes in order to download results into computer and have timing ready for next race. If you have a runner that takes more than 25 minutes they will not appear on baumspage.com or in the race results.**
- **There will be no registration the day of the meet. Please adhere to the online entry guidelines!**
- Your team may walk the course by following these guides: Run between double-lines or follow single line; red flag, turn left; yellow flag, turn right; blue flag, straight ahead (either side).
- All teams must have finished walking the course by 20 minutes prior to race time.
- Contestants will be called to the start promptly after the start of the previous race. All contestants must have checked in with the clerk at least 10 minutes prior to the start time. Warm-up periods should be regulated to allow for this. Coaches are expected to notify their runners of this so that there will be no delay in the start time of the races. **Numbers should be worn on front of jersey.**
- **ALL BUSES ARE TO PARK BETWEEN KETTERING MS AND INDIAN RIFFLE ELEMENTARY**

Enclosed in this packet is a map to guide your team around the course. Also enclosed are directions for our online registration. Please feel free to contact Frank Baxter in the Fairmont athletic office if registering online is a concern at 937-499-1644.

\$100.00 for each Boys High School Team (Varsity, JV, or both)
 \$100.00 for each Girls High School Team (Varsity, JV, or both)
 \$75.00 for each Boys Junior High Team (Varsity, JV, or both)
 \$75.00 for each Girls Junior High Team (Varsity, JV, or both)

\$300.00 MAXIMUM PER SCHOOL BUILDING**Contracts due to Fairmont High School by September 18, 2015.****Contracts via MyOHSAA****Fees due to Fairmont High School by September 25, 2015.****ENTRY FEE:****CHIP TIMING (Alliance Running)****There is a \$15 fee for every lost chip!****You will be registering your teams online at:**<http://www.baumspage.com/cc/index.php>**Entries will close the week of the event!****No late entries will be accepted, no exceptions. Register early.**

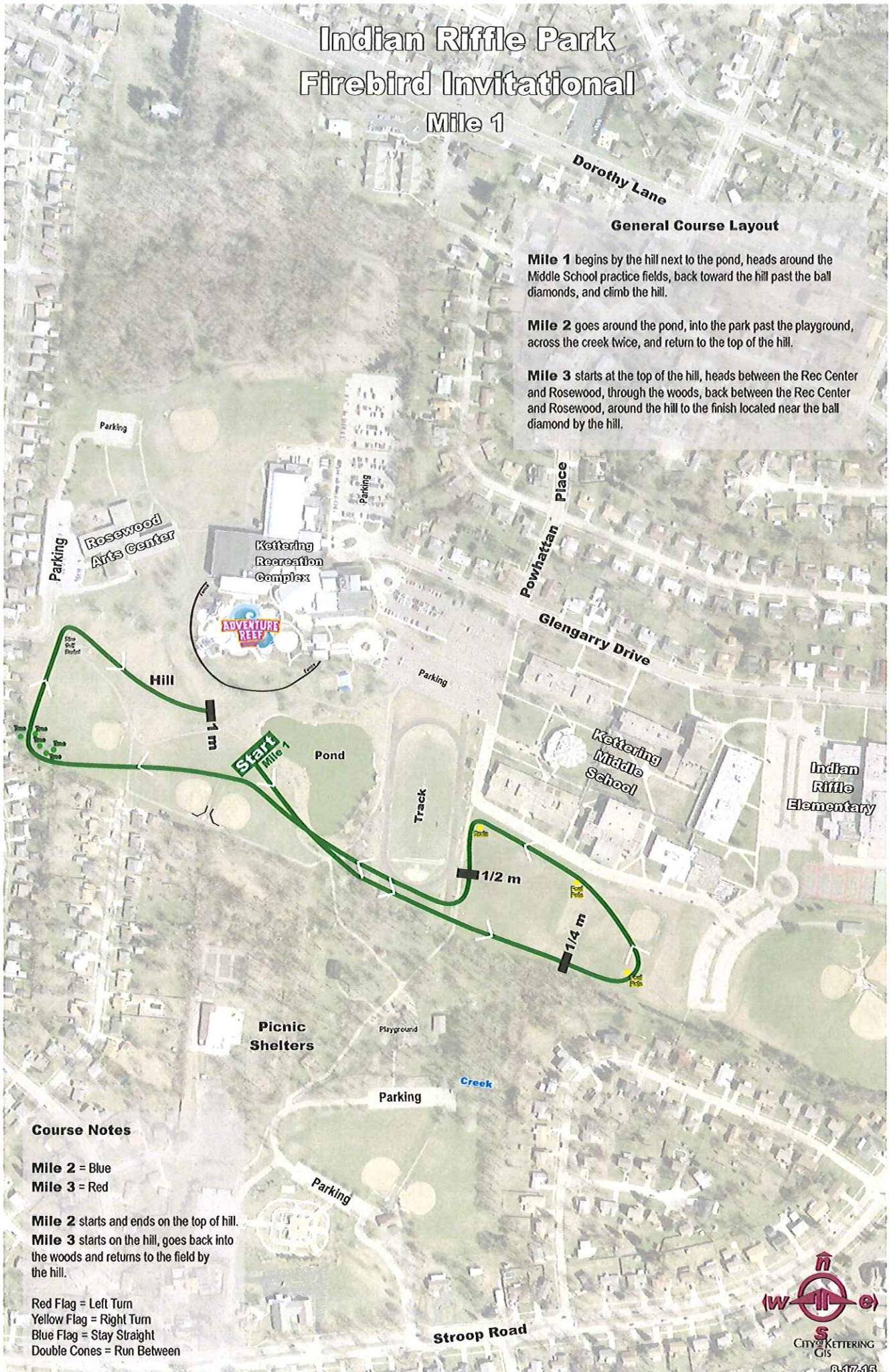
Indian Riffle Park Firebird Invitational Mile 1

General Course Layout

Mile 1 begins by the hill next to the pond, heads around the Middle School practice fields, back toward the hill past the ball diamonds, and climb the hill.

Mile 2 goes around the pond, into the park past the playground, across the creek twice, and return to the top of the hill.

Mile 3 starts at the top of the hill, heads between the Rec Center and Rosewood, through the woods, back between the Rec Center and Rosewood, around the hill to the finish located near the ball diamond by the hill.



Course Notes

Mile 2 = Blue

Mile 3 = Red

Mile 2 starts and ends on the top of hill.

Mile 3 starts on the hill, goes back into the woods and returns to the field by the hill.

- Red Flag = Left Turn
- Yellow Flag = Right Turn
- Blue Flag = Stay Straight
- Double Cones = Run Between



Indian Riffle Park Firebird Invitational 5000 M Course Miles 2 & 3

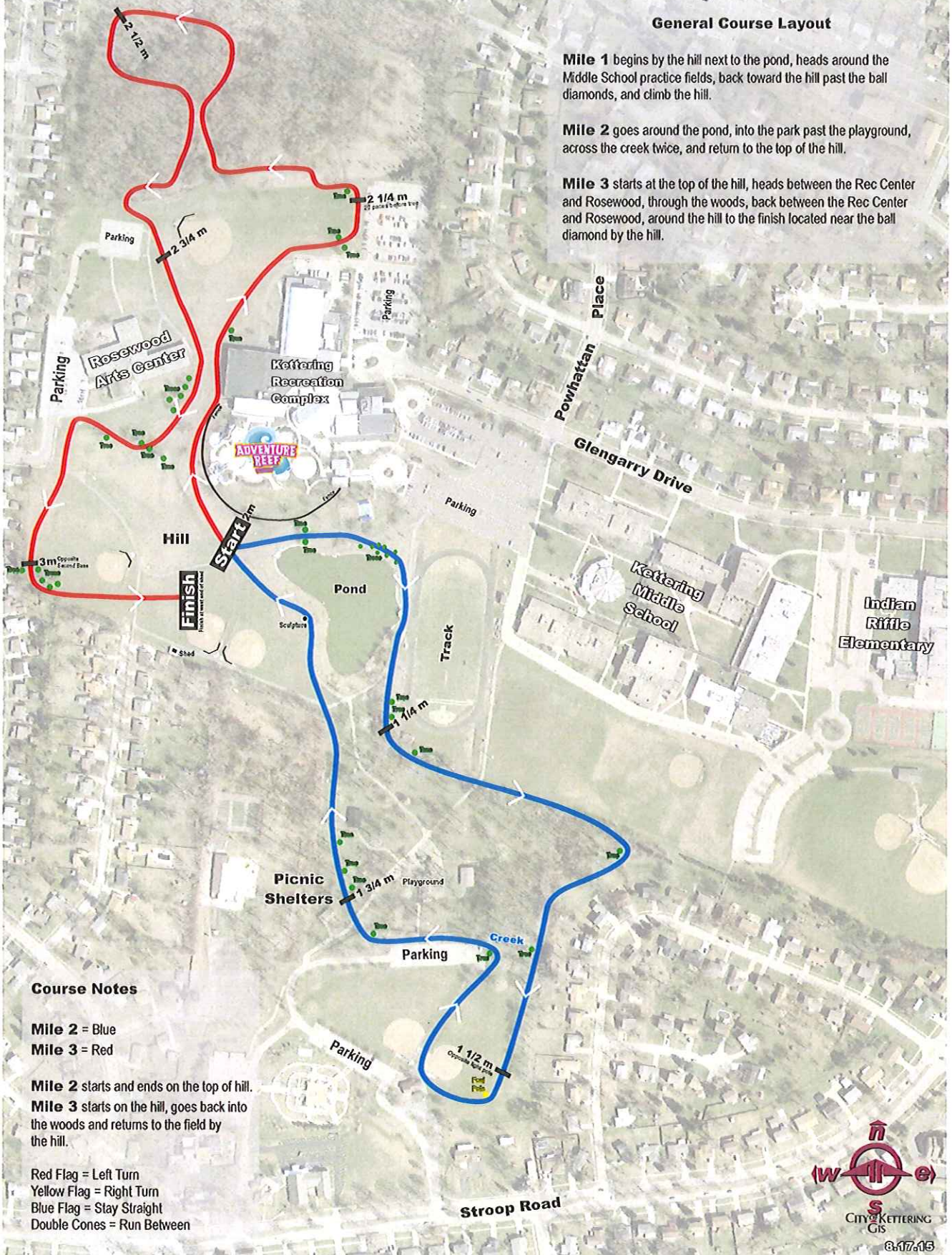
Dorothy Lane

General Course Layout

Mile 1 begins by the hill next to the pond, heads around the Middle School practice fields, back toward the hill past the ball diamonds, and climb the hill.

Mile 2 goes around the pond, into the park past the playground, across the creek twice, and return to the top of the hill.

Mile 3 starts at the top of the hill, heads between the Rec Center and Rosewood, through the woods, back between the Rec Center and Rosewood, around the hill to the finish located near the ball diamond by the hill.



Course Notes

Mile 2 = Blue
Mile 3 = Red

Mile 2 starts and ends on the top of the hill.
Mile 3 starts on the hill, goes back into the woods and returns to the field by the hill.

Red Flag = Left Turn
Yellow Flag = Right Turn
Blue Flag = Stay Straight
Double Cones = Run Between

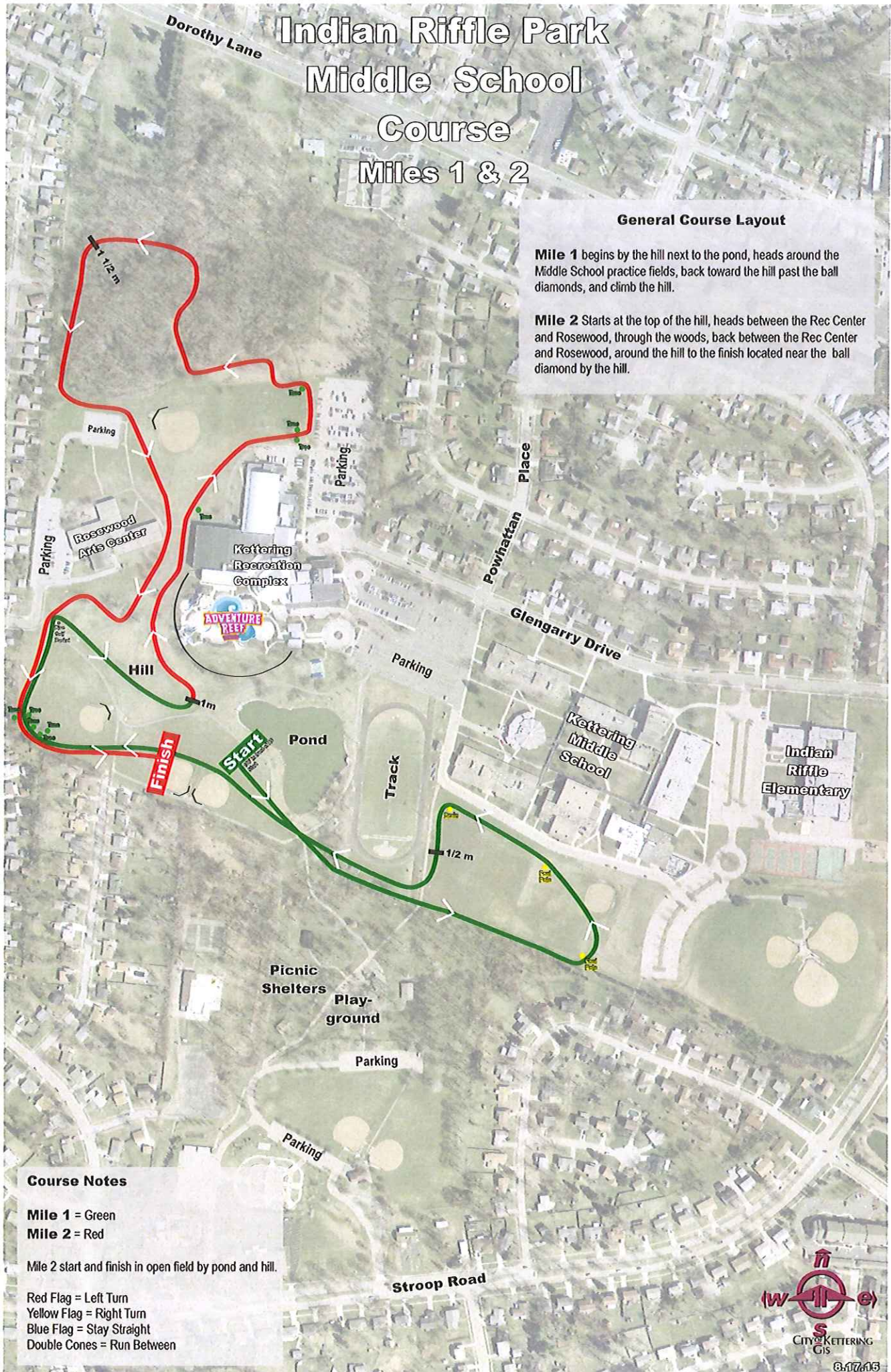


Indian Riffle Park Middle School Course Miles 1 & 2

General Course Layout

Mile 1 begins by the hill next to the pond, heads around the Middle School practice fields, back toward the hill past the ball diamonds, and climb the hill.

Mile 2 Starts at the top of the hill, heads between the Rec Center and Rosewood, through the woods, back between the Rec Center and Rosewood, around the hill to the finish located near the ball diamond by the hill.



Course Notes

Mile 1 = Green

Mile 2 = Red

Mile 2 start and finish in open field by pond and hill.

Red Flag = Left Turn

Yellow Flag = Right Turn

Blue Flag = Stay Straight

Double Cones = Run Between

